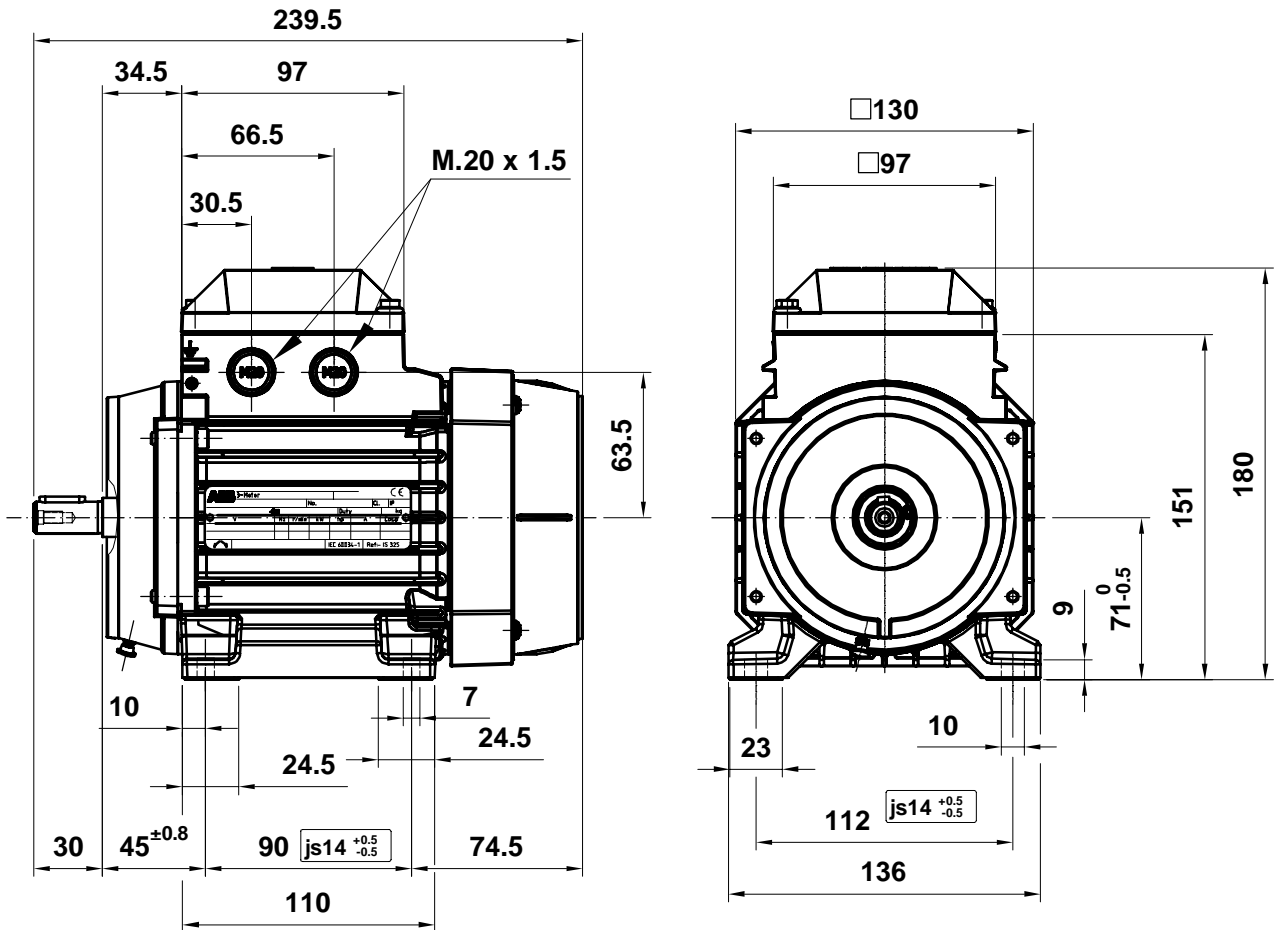
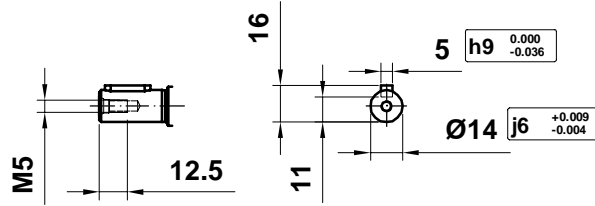


# Motor data sheet

## M2AA 71A 2

Definition	Data	Unit	Remarks
Product code	3GAA071001-***E		
Voltage code	D		
Type/Frame	M2AA 71A 2		
Design	CENELEC		
Efficiency class	IE3		
Rated output $P_N$	0.37	kW	
Rated voltage $U_N$	400	V D	± 5 % (IEC 60034-1)
Rated frequency $f_N$	50	Hz	± 2 % (IEC 60034-1)
Rated speed $n_N$	2800	r/min	
Rated current $I_N$	0.95	A	
Starting current $I_S/I_N$	4.9		
Nominal torque $T_N$	1.26	Nm	
Locked rotor torque $T_l/T_N$	2.7		
Maximum torque $T_b/T_N$	2.7		
Efficiency - full load 100%	73.8	%	Acc. to IEC 60034-2-1
Efficiency - 75%	75.8	%	
Efficiency - 50%	73.9	%	
Power factor - full load 100%	0.76		
Bearing DE/NDE	6203-2Z/C3 6202-2Z/C3		
Sound pressure level $L_{pA}$ dB	58	dB(A)	+3dB(A)
Moment of inertia $J = \frac{1}{4} GD^2$ kgm <sup>2</sup>	0	kg-m <sup>2</sup>	
Weight	4.9	kg	



# M2AA 071

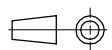
## Motor Dimension Print

Motor Type :  
M2AA 071

Document N° :  
A1.5400 / 3D A2.5010

Description :

Motor foot mounted IM1001 / Motor con patas IM1001



Unit : Discrete Automation and Motion - Fáb. Motores

Issued by : ERM / L. Moreno

Replaces :